



The Value of Siteline™

- ▲ **Visibility and control:** Offers complete real time dashboards for an overview of wash floor activities
- ▲ **Water and energy management:** Assists you in savings on boiler gas, dryer gas and water
- ▲ **Reporting:** Measures and reports key metrics, which provides you actionable data for continuous improvement
- ▲ **Monitoring and control:** Enables remote monitoring and troubleshooting, which accelerates the speed at which corrective actions are taken
- ▲ **Easy online access:** Web-based access anywhere, anytime

Bringing you “best in class” service: Ecolab’s representatives use this tool and provide you with actionable data to reduce your operational costs thus improving overall efficiencies.

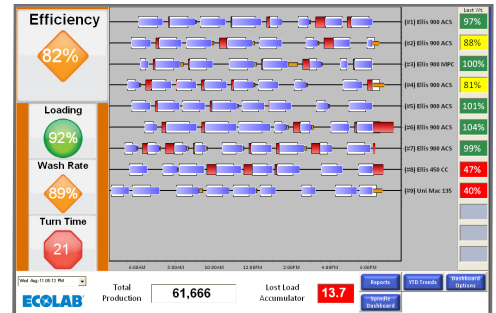


Siteline™ brings you revolutionary offerings to reduce your operational costs

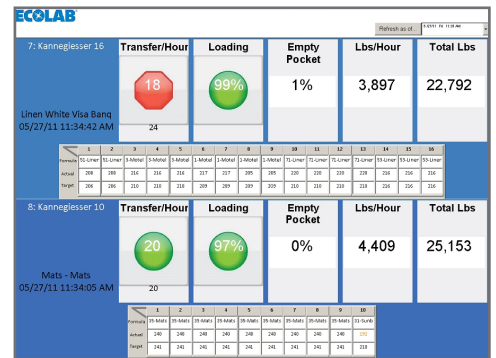
Chemwatch™

- ▲ Real time washfloor overview software gives you
 - Visual workplace
 - 6 Web based reports
 - 15 Local management reports
 - Additional detailed reports with benchmarking
 - Remote access for plant status review or system troubleshooting
- ▲ Measures key metrics for conventional and tunnel washers
 - Actual soil weight processed vs. target
 - Loading efficiency
 - Operational efficiency
 - Tunnel transfers/hr
 - Hold time, run time, turn time
 - Chemical CWT cost

Conventional Washer Dashboard



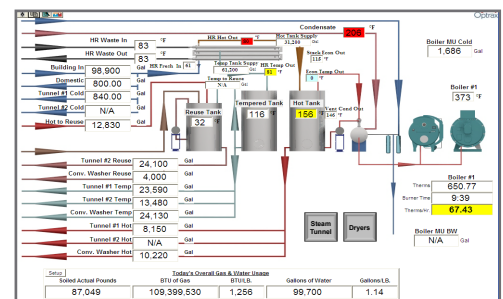
Tunnel Washer Dashboard



Utiliwatch™

- ▲ Assists you in reducing your utility costs by monitoring water and energy usage
- ▲ Significant savings on gas
 - Dryers
 - Boilers
 - Steam tunnels
 - Building
- ▲ Tracks and help save water
 - Fresh
 - Recycled / reused
 - Effluent
- ▲ Shows you where your opportunities for savings are!

Utilities Area for a Laundry



Worldwide Headquarters

370 Wabasha Street N St. Paul, MN 55102
 www.ecolab.com 1 800 553 8683

© 2011 Ecolab USA Inc. All rights reserved.

