

# ENERGY STAR® CERTIFIED CONVEYOR DISHMACHINE

## DUAL RATED FOR HIGH AND LOW TEMPERATURE OPERATIONS

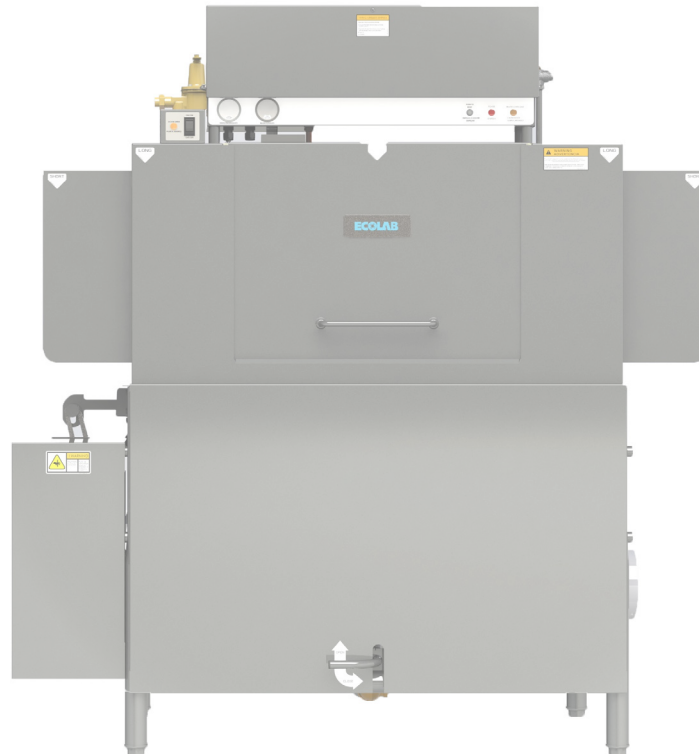
### EC-LW Conveyor Dishmachine

- ▲ ENERGY STAR® certified 0.62 gals/rack provides one-pass wash results with water and energy efficiency.
- ▲ Free-flow wash intake inhibits clogging, improves performance, reduces maintenance.
- ▲ 44" and 66" sizes available with High Hood and Sideloader options to configure for your needs.

.....

Renting a dishmachine from Ecolab allows you to focus on your business with the security of knowing your warewashing operation is properly managed.

.....



# EC-LW Conveyor Dishmachine

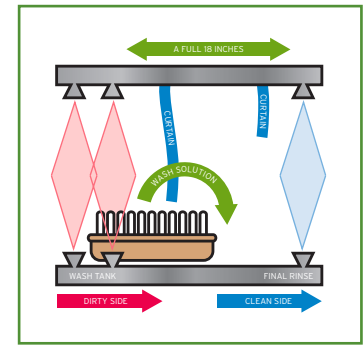
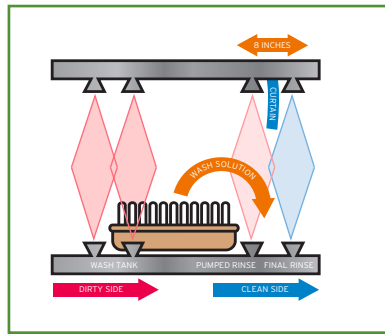
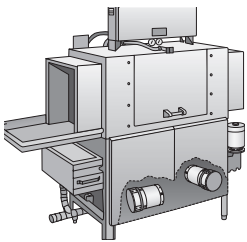
## Saves Water and Conserves Energy

### PROBLEM:

- ▲ 66" dishmachine design forced into 44" cabinet.
- ▲ Wash solution gets re-deposited into pumped rinse tank.
- ▲ Dish racks move so quickly that wash solution doesn't have time or distance to fall back into the main wash tank.
- ▲ Only 8" separating newly detergent charged pumped rinse tank from final rinse.

### SOLUTION:

- ▲ Ecolab's EC-44 conveyor is designed as a 44" dishmachine with 18" of wash and rinse separation.
- ▲ Offers sufficient fall back for wash detergent.
- ▲ S.S. pump and impeller assembly, 2hp wash pump motor.



44" Conveyor  
EC44-LW, EC44HH-LW



## EC-LW Conveyor Dishmachine Features

- ▲ ENERGY STAR® certified 0.62 gals/rack provides one-pass wash results with water and energy efficiency.
- ▲ Free-Flow wash intake inhibits clogging, improves performance, reduces maintenance.
- ▲ Separation of wash and rinse sections helps prevent water contamination in the final rinse.
- ▲ Conveyor Dishmachine with high throughput of up to 244 racks per hour provides fast results.
- ▲ Extended 18" wash section provides consistent results.
- ▲ 66" Conveyor offer all the benefits of the 44", and adds pre-wash section to remove heavy soil and deposits.
- ▲ High Hood configuration offers 25" clearance in wash chamber.
- ▲ Sideloader option allows for placement in tight corner locations.

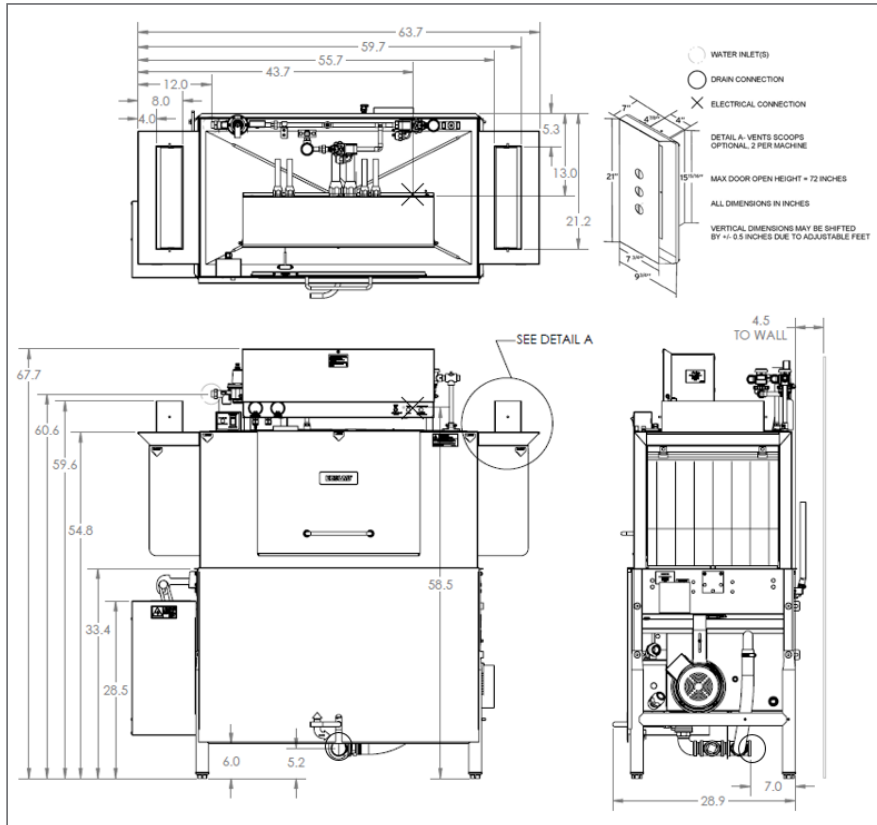
66" Conveyor  
EC66-LW, EC66HH-LW



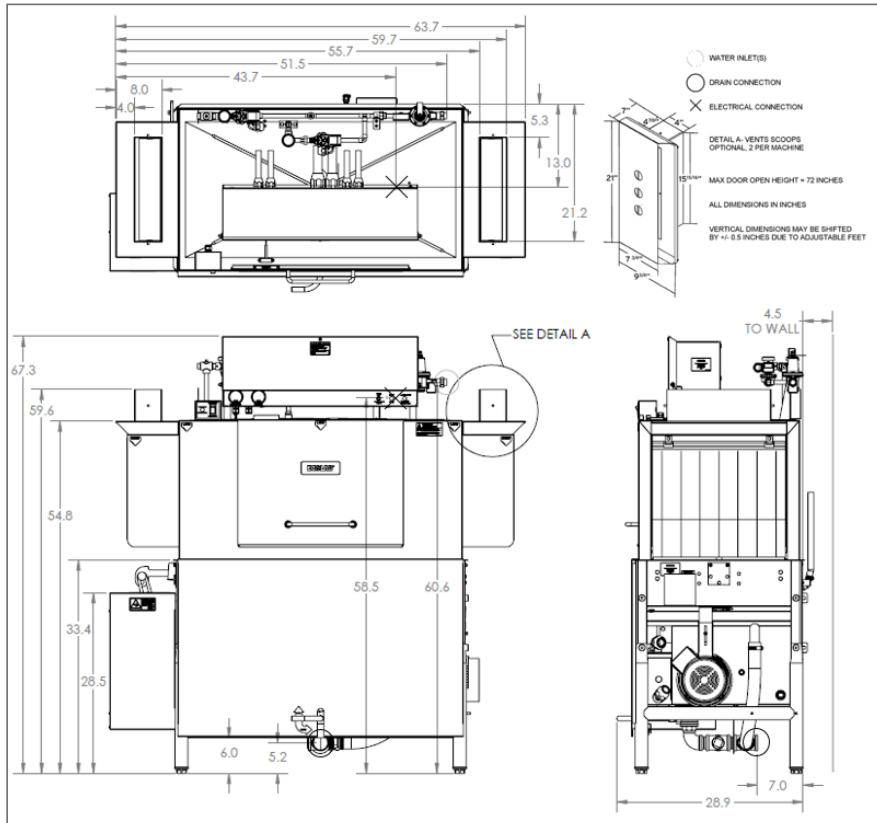
# EC44-LW



## LEFT TO RIGHT



## RIGHT TO LEFT



## SPECIFICATIONS

### OPERATING CAPACITY

|                |     |
|----------------|-----|
| Racks per Hour | 244 |
|----------------|-----|

### OPERATING TEMPERATURES

|            |        |
|------------|--------|
| Wash (min) |        |
| low-temp   | 140° F |
| high-temp  | 160° F |

|                        |        |
|------------------------|--------|
| Sanitizing Rinse (min) |        |
| low-temp               | 120° F |
| high-temp              | 180° F |

### WATER CONSUMPTION

|                  |      |
|------------------|------|
| Gallons per Rack | 0.62 |
|------------------|------|

### ELECTRICAL RATINGS

|           |      |
|-----------|------|
| Wash Pump | 2 hp |
|-----------|------|

|             |        |
|-------------|--------|
| Drive Motor | 1/4 hp |
|-------------|--------|

### WASH CHAMBER

|                 |     |
|-----------------|-----|
| Internal Height | 18" |
|-----------------|-----|

### WEIGHT

|                |         |
|----------------|---------|
| Machine Weight | 626 lbs |
|----------------|---------|

### UTILITY REQUIREMENTS ELECTRICAL

|                            |                |
|----------------------------|----------------|
| Voltage/Frequency/Phase:   | 208V/60Hz/3 Ph |
| Total Amperage             | 48.75 A        |
| Minimum Electrical Circuit | 60 A           |

|                            |                |
|----------------------------|----------------|
| Voltage/Frequency/Phase:   | 230V/60Hz/3 Ph |
| Total Amperage             | 44.6 A         |
| Minimum Electrical Circuit | 50 A           |

|                            |                |
|----------------------------|----------------|
| Voltage/Frequency/Phase:   | 460V/60Hz/3 Ph |
| Total Amperage             | 22.3 A         |
| Minimum Electrical Circuit | 25 A           |

|                            |                |
|----------------------------|----------------|
| Voltage/Frequency/Phase:   | 208V/60Hz/1 Ph |
| Total Amperage             | 82.65 A        |
| Minimum Electrical Circuit | 90 A           |

|                            |                |
|----------------------------|----------------|
| Voltage/Frequency/Phase:   | 230V/60Hz/1 Ph |
| Total Amperage             | 75.85 A        |
| Minimum Electrical Circuit | 80 A           |

### WATER

|                             |           |
|-----------------------------|-----------|
| Waterline Size (min)        | 1/2"      |
| Flow Pressure (required)    | 15-25 psi |
| Incoming Temp (min)         |           |
| low-temp                    | 120° F    |
| high-temp                   | 180° F    |
| Incoming Temp (recommended) |           |
| low-temp                    | 140° F    |
| high-temp                   | 180° F    |

### DRAIN

|                |        |
|----------------|--------|
| Drainline Size | 1 1/2" |
|----------------|--------|

### VENT HOOD

|                            |     |
|----------------------------|-----|
| Flow-Cubic Feet per Minute | 600 |
|----------------------------|-----|

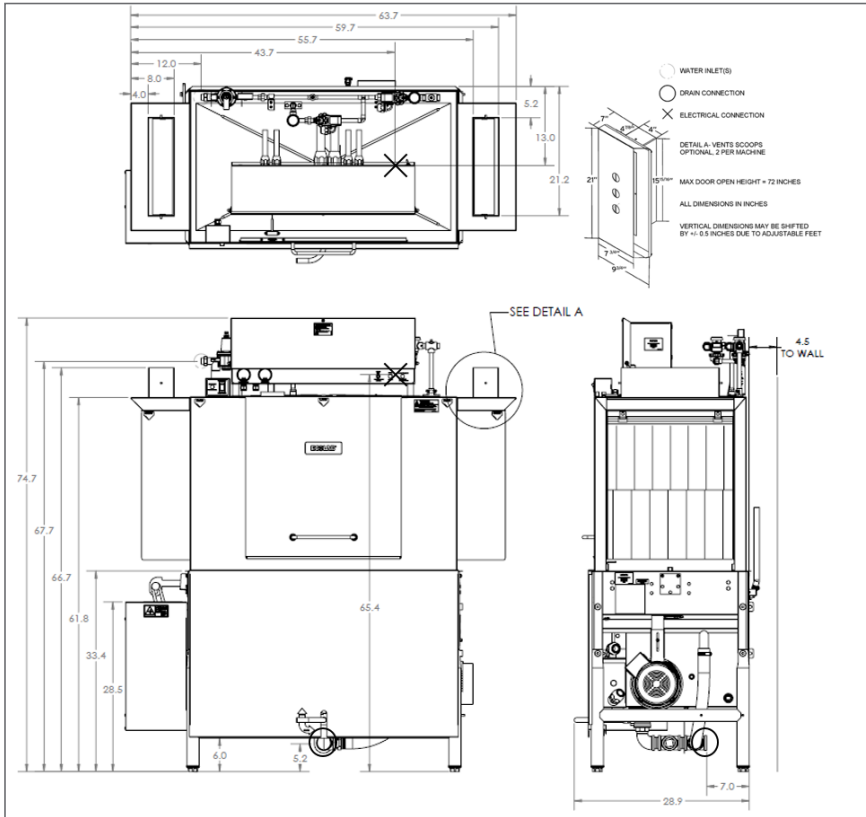
### CHEMICAL SANITIZER RINSE

|                                  |    |
|----------------------------------|----|
| Minimum chlorine, ppm (low-temp) | 50 |
|----------------------------------|----|

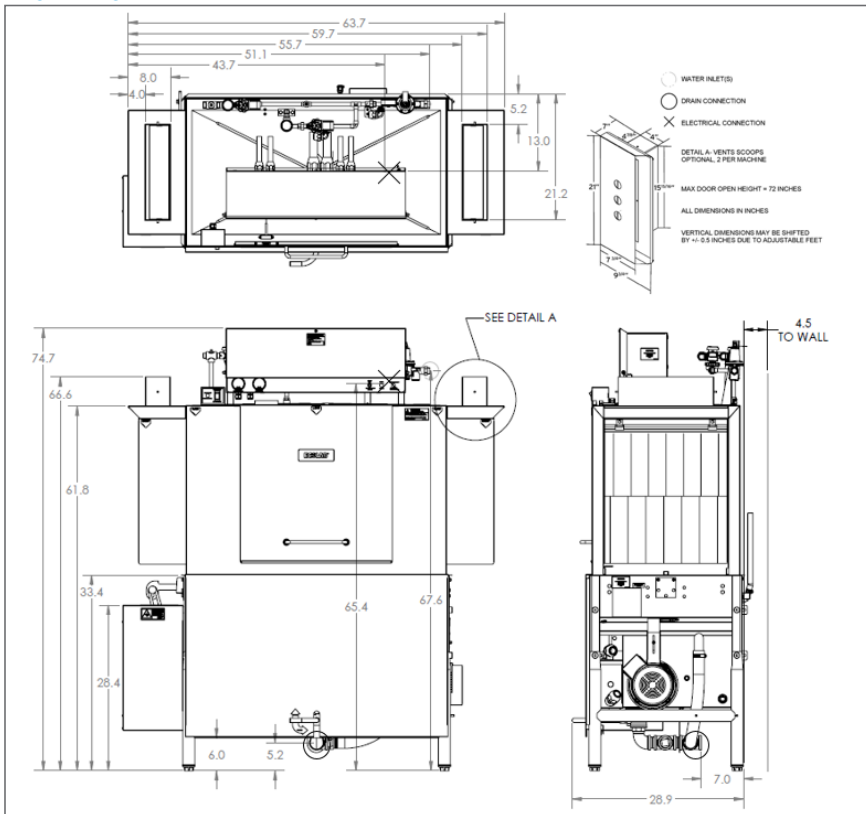
# EC44HH-LW



## LEFT TO RIGHT



## RIGHT TO LEFT



## SPECIFICATIONS

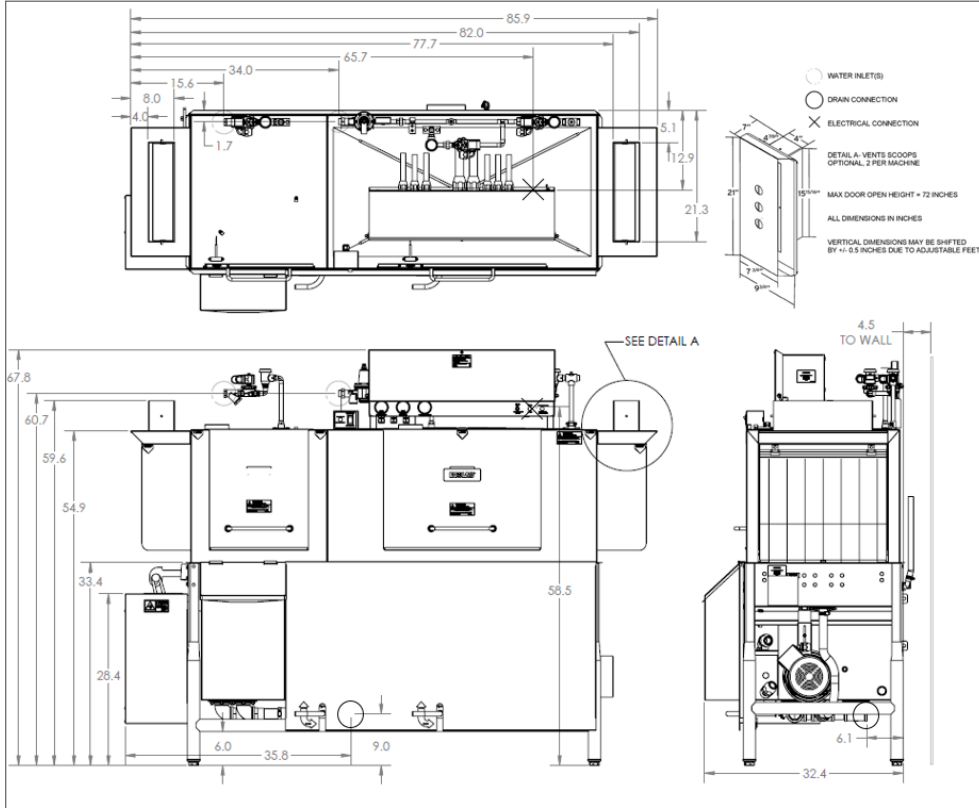
| OPERATING CAPACITY               |           |
|----------------------------------|-----------|
| Racks per Hour                   | 244       |
| OPERATING TEMPERATURES           |           |
| Wash (min)                       |           |
| low-temp                         | 140° F    |
| high-temp                        | 160° F    |
| Sanitizing Rinse (min)           |           |
| low-temp                         | 120° F    |
| high-temp                        | 180° F    |
| WATER CONSUMPTION                |           |
| Gallons per Rack                 | 0.62      |
| ELECTRICAL RATINGS               |           |
| Wash Pump                        | 2 hp      |
| Drive Motor                      | 1/4 hp    |
| WASH CHAMBER                     |           |
| Internal Height                  | 25"       |
| WEIGHT                           |           |
| Machine Weight                   | 637 lbs   |
| UTILITY REQUIREMENTS ELECTRICAL  |           |
| Voltage/Frequency/Phase:         |           |
| 208V/60Hz/3 Ph                   |           |
| Total Amperage                   | 48.75 A   |
| Minimum Electrical Circuit       | 60 A      |
| Voltage/Frequency/Phase:         |           |
| 230V/60Hz/3 Ph                   |           |
| Total Amperage                   | 44.6 A    |
| Minimum Electrical Circuit       | 50 A      |
| Voltage/Frequency/Phase:         |           |
| 460V/60Hz/3 Ph                   |           |
| Total Amperage                   | 22.3 A    |
| Minimum Electrical Circuit       | 25 A      |
| Voltage/Frequency/Phase:         |           |
| 208V/60Hz/1 Ph                   |           |
| Total Amperage                   | 82.65 A   |
| Minimum Electrical Circuit       | 90 A      |
| Voltage/Frequency/Phase:         |           |
| 230V/60Hz/1 Ph                   |           |
| Total Amperage                   | 75.85 A   |
| Minimum Electrical Circuit       | 80 A      |
| WATER                            |           |
| Waterline Size (min)             | 1/2"      |
| Flow Pressure (required)         | 15-25 psi |
| Incoming Temp (min)              |           |
| low-temp                         | 120° F    |
| high-temp                        | 180° F    |
| Incoming Temp (recommended)      |           |
| low-temp                         | 140° F    |
| high-temp                        | 180° F    |
| DRAIN                            |           |
| Drainline Size                   | 1 1/2"    |
| VENT HOOD                        |           |
| Flow-Cubic Feet per Minute       | 600       |
| CHEMICAL SANITIZER RINSE         |           |
| Minimum chlorine, ppm (low-temp) | 50        |

# EC66-LW

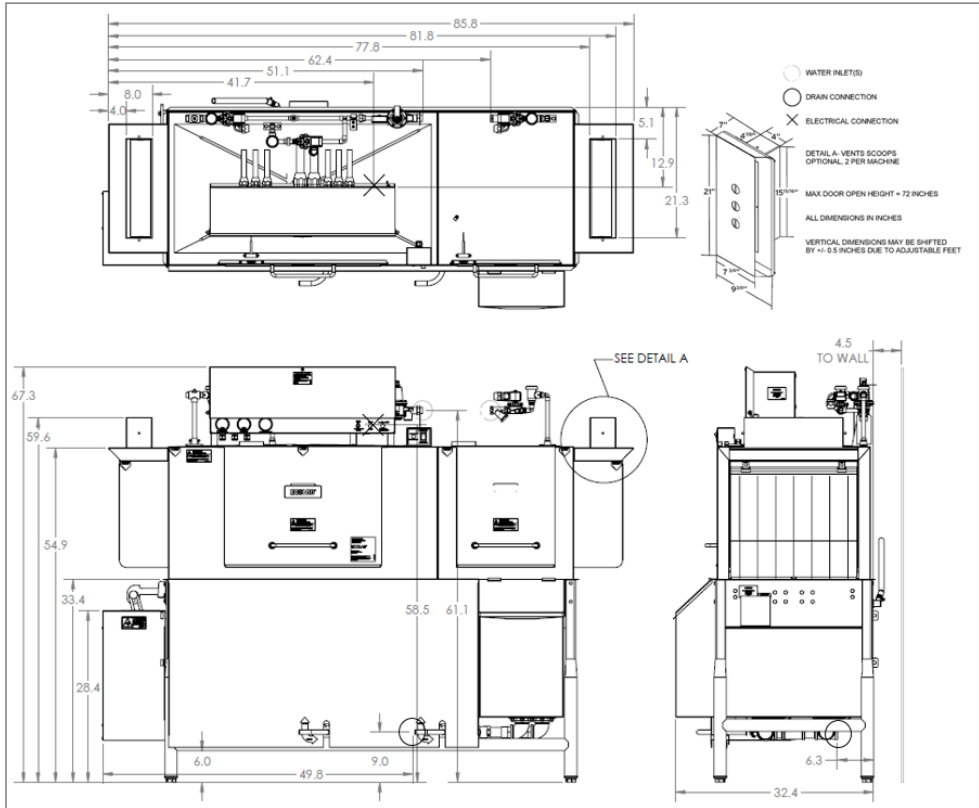


## SPECIFICATIONS

### LEFT TO RIGHT



### RIGHT TO LEFT



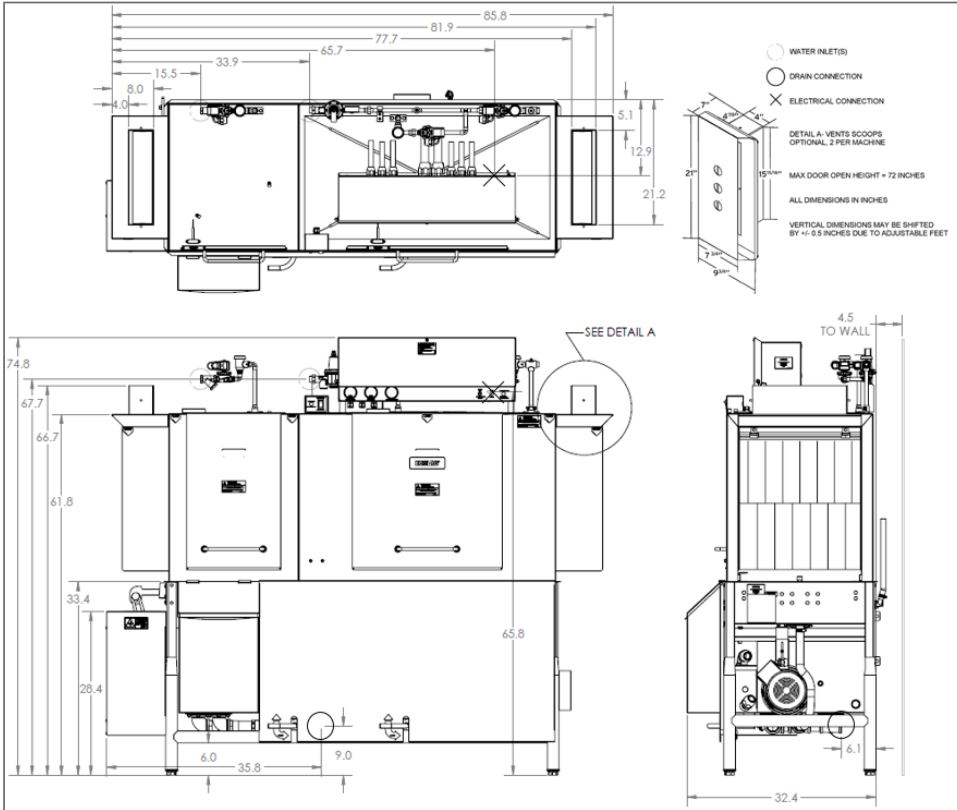
| OPERATING CAPACITY               |           |
|----------------------------------|-----------|
| Racks per Hour                   | 244       |
| OPERATING TEMPERATURES           |           |
| Wash (min)                       |           |
| low-temp                         | 140° F    |
| high-temp                        | 160° F    |
| Sanitizing Rinse (min)           |           |
| low-temp                         | 120° F    |
| high-temp                        | 180° F    |
| WATER CONSUMPTION                |           |
| Gallons per Rack                 | 0.62      |
| ELECTRICAL RATINGS               |           |
| Wash Pump                        | 2 hp      |
| Pre-Wash Pump                    | 1 hp      |
| Drive Motor                      | 1/4 hp    |
| WASH CHAMBER                     |           |
| Internal Height                  | 18"       |
| WEIGHT                           |           |
| Machine Weight                   | 872 lbs   |
| UTILITY REQUIREMENTS ELECTRICAL  |           |
| Voltage/Frequency/Phase:         |           |
| 208V/60Hz/3 Ph                   |           |
| Total Amperage                   | 52.15 A   |
| Typical Electrical Circuit       | 60 A      |
| Voltage/Frequency/Phase:         |           |
| 230V/60Hz/3 Ph                   |           |
| Total Amperage                   | 48.0 A    |
| Typical Electrical Circuit       | 60 A      |
| Voltage/Frequency/Phase:         |           |
| 460V/60Hz/3 Ph                   |           |
| Total Amperage                   | 24.1 A    |
| Typical Electrical Circuit       | 30 A      |
| Voltage/Frequency/Phase:         |           |
| 208V/60Hz/1 Ph                   |           |
| Total Amperage                   | 88.65 A   |
| Typical Electrical Circuit       | 100 A     |
| Voltage/Frequency/Phase:         |           |
| 230V/60Hz/1 Ph                   |           |
| Total Amperage                   | 81.85 A   |
| Typical Electrical Circuit       | 90 A      |
| WATER                            |           |
| Waterline Size (min)             | 1/2"      |
| Flow Pressure (required)         | 15-25 psi |
| Incoming Temp (min)              |           |
| low-temp                         | 120° F    |
| high-temp                        | 180° F    |
| Incoming Temp (recommended)      |           |
| low-temp                         | 140° F    |
| high-temp                        | 180° F    |
| DRAIN                            |           |
| Drainline Size                   | 1 1/2"    |
| VENT HOOD                        |           |
| Flow-Cubic Feet per Minute       | 600       |
| CHEMICAL SANITIZER RINSE         |           |
| Minimum chlorine, ppm (low-temp) | 50        |

# EC66HH-LW

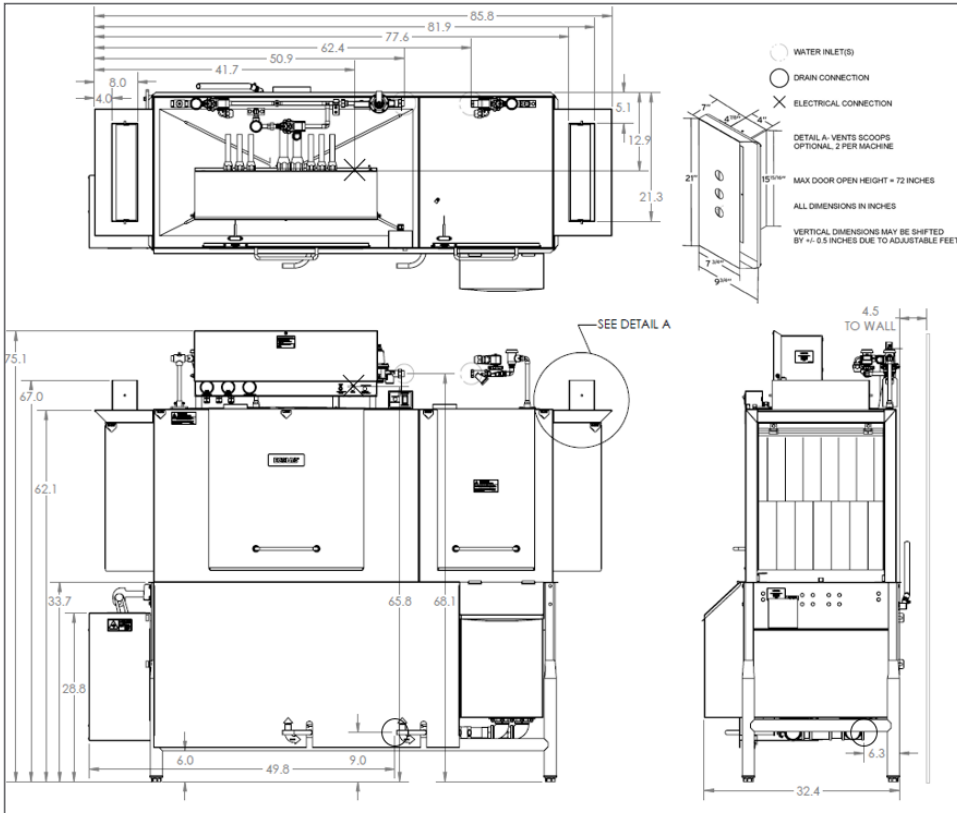


## SPECIFICATIONS

### LEFT TO RIGHT



### RIGHT TO LEFT



#### OPERATING CAPACITY

|                |     |
|----------------|-----|
| Racks per Hour | 244 |
|----------------|-----|

#### OPERATING TEMPERATURES

|                        |        |
|------------------------|--------|
| Wash (min)             |        |
| low-temp               | 140° F |
| high-temp              | 160° F |
| Sanitizing Rinse (min) |        |
| low-temp               | 120° F |
| high-temp              | 180° F |

#### WATER CONSUMPTION

|                  |      |
|------------------|------|
| Gallons per Rack | 0.62 |
|------------------|------|

#### ELECTRICAL RATINGS

|               |        |
|---------------|--------|
| Wash Pump     | 2 hp   |
| Pre-Wash Pump | 1 hp   |
| Drive Motor   | 1/4 hp |

#### WASH CHAMBER

|                 |     |
|-----------------|-----|
| Internal Height | 25" |
|-----------------|-----|

#### WEIGHT

|                |         |
|----------------|---------|
| Machine Weight | 888 lbs |
|----------------|---------|

#### UTILITY REQUIREMENTS ELECTRICAL

|                            |                |
|----------------------------|----------------|
| Voltage/Frequency/Phase:   | 208V/60Hz/3 Ph |
| Total Amperage             | 52.15 A        |
| Typical Electrical Circuit | 60 A           |

|                            |                |
|----------------------------|----------------|
| Voltage/Frequency/Phase:   | 230V/60Hz/3 Ph |
| Total Amperage             | 48.0 A         |
| Typical Electrical Circuit | 60 A           |

|                            |                |
|----------------------------|----------------|
| Voltage/Frequency/Phase:   | 460V/60Hz/3 Ph |
| Total Amperage             | 24.1 A         |
| Typical Electrical Circuit | 30 A           |

|                            |                |
|----------------------------|----------------|
| Voltage/Frequency/Phase:   | 208V/60Hz/1 Ph |
| Total Amperage             | 88.65 A        |
| Typical Electrical Circuit | 100 A          |

|                            |                |
|----------------------------|----------------|
| Voltage/Frequency/Phase:   | 230V/60Hz/1 Ph |
| Total Amperage             | 81.85 A        |
| Typical Electrical Circuit | 90 A           |

#### WATER

|                             |           |
|-----------------------------|-----------|
| Waterline Size (min)        | 1/2"      |
| Flow Pressure (required)    | 15-25 psi |
| Incoming Temp (min)         |           |
| low-temp                    | 120° F    |
| high-temp                   | 180° F    |
| Incoming Temp (recommended) |           |
| low-temp                    | 140° F    |
| high-temp                   | 180° F    |

#### DRAIN

|                |        |
|----------------|--------|
| Drainline Size | 1 1/2" |
|----------------|--------|

#### VENT HOOD

|                            |     |
|----------------------------|-----|
| Flow-Cubic Feet per Minute | 600 |
|----------------------------|-----|

#### CHEMICAL SANITIZER RINSE

|                                  |    |
|----------------------------------|----|
| Minimum chlorine, ppm (low-temp) | 50 |
|----------------------------------|----|